



Installation Procedure



This article describes the regular installation procedure for single devices with the IGEL OS Creator (OSC). If you are an IGEL third-party endpoint partner (i.e. hardware manufacturer, independent hardware vendor, reseller) that has a factory ID from IGEL, please refer to Installation Procedure for Factory Images.

⚠ The installation will overwrite all existing data on the target drive.

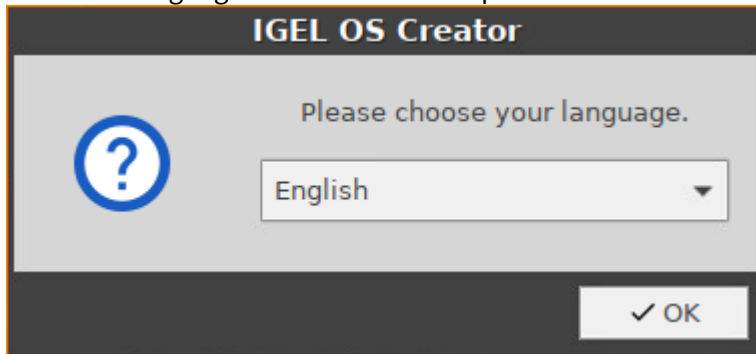
1. Connect the prepared USB memory stick to the target device and switch the target device on.
2. Select one of the following options from the boot menu:



- **Standard Installation + Recovery:** Boots the system with just a few messages from the USB memory stick and launches the installation program. (Default)
- **Verbose Installation + Recovery:** Boots the system from the USB memory stick and shows the Linux boot messages in the process.
- **Failsafe Installation + Recovery:** Fallback mode to be used if the graphical boot screen cannot be displayed.
- **Memory Test:** Memory test, only available in legacy/BIOS mode. This option does not carry out an installation.
- **EFI Debug Shell:** Available only in UEFI boot mode. If the hardware in use is EFI-capable, boot problems can be analyzed with that.

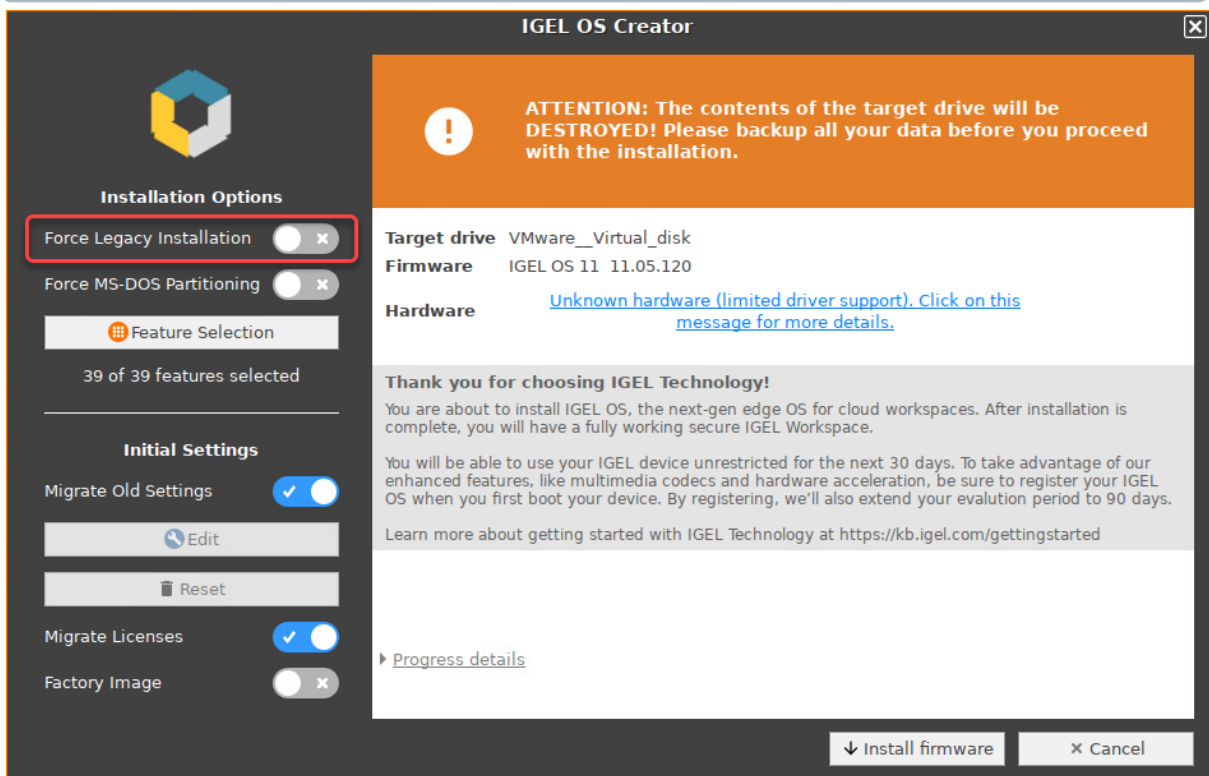


3. Select the language for the installation process.



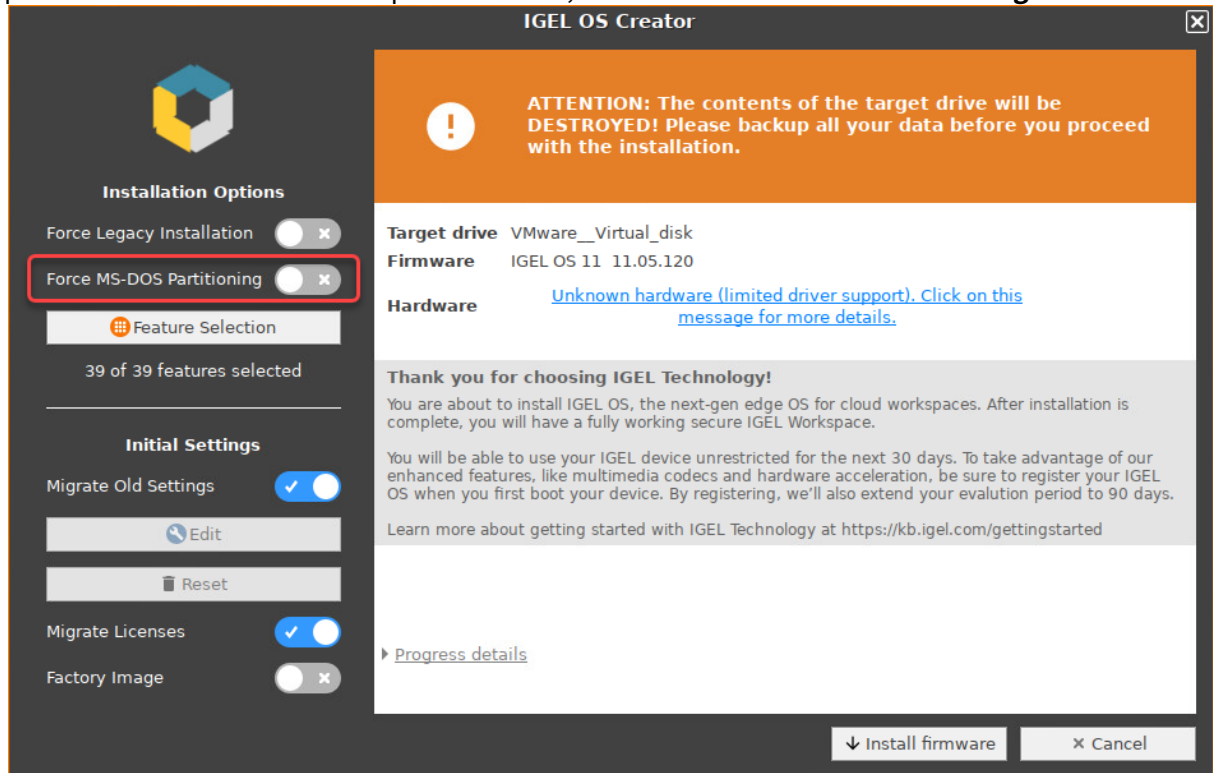
4. Optional, only available if your device has booted in UEFI mode: If you want to install the legacy/BIOS version of IGEL OS 11, activate **Force Legacy Installation**.

i If you have activated **Force Legacy Installation**, remember to set the system to legacy/BIOS mode after installation.



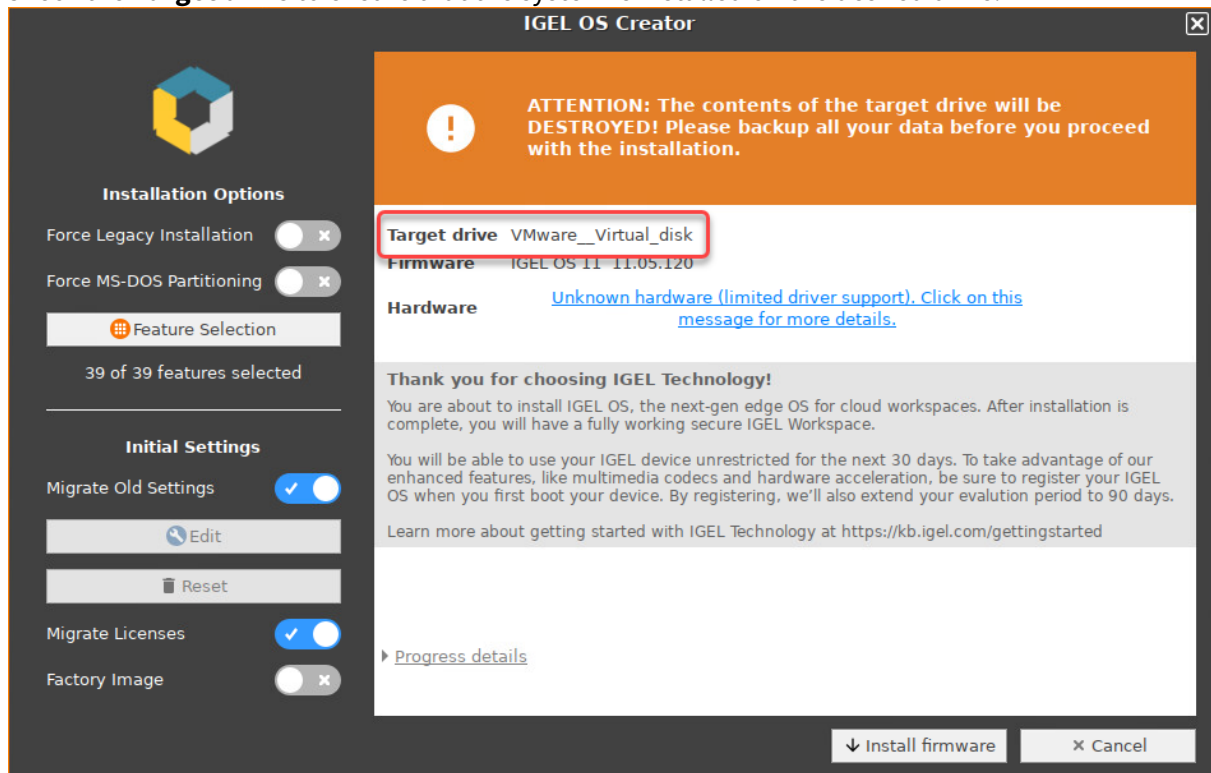


- Optional, only available if your device has booted in UEFI mode: If you want to use an MS-DOS partition table instead of a GPT partition table, activate **Force MS-DOS Partitioning**.





6. Check the **Target drive** to ensure that the system is installed on the desired drive.




7. If you want to exclude features of IGEL OS, e.g. to save storage space, click **Feature Selection** and edit the settings as required.



IGEL OS Creator ✕


! **ATTENTION: The contents of the target drive will be DESTROYED! Please backup all your data before you proceed with the installation.**



Installation Options

Force Legacy Installation ✕

Force MS-DOS Partitioning ✕

 **Feature Selection**

39 of 39 features selected

Initial Settings

Migrate Old Settings

Migrate Licenses

Factory Image ✕

Target drive VMware__Virtual_disk

Firmware IGEL OS 11 11.05.120

Hardware [Unknown hardware \(limited driver support\). Click on this message for more details.](#)

Thank you for choosing IGEL Technology!

You are about to install IGEL OS, the next-gen edge OS for cloud workspaces. After installation is complete, you will have a fully working secure IGEL Workspace.

You will be able to use your IGEL device unrestricted for the next 30 days. To take advantage of our enhanced features, like multimedia codecs and hardware acceleration, be sure to register your IGEL OS when you first boot your device. By registering, we'll also extend your evaluation period to 90 days.

Learn more about getting started with IGEL Technology at <https://kb.igel.com/gettingstarted>

▸ [Progress details](#)



Feature Selection

Disk size 17.2 GB, firmware size 2.7 GB
Select the set of features to be installed on the target device.

Total size of all features: 1.9 GB

Install	Feature	Size
<input checked="" type="checkbox"/>	Citrix ICA	301.7 MB
<input checked="" type="checkbox"/>	Imprivata	273.4 MB
<input checked="" type="checkbox"/>	Local browser (Chromium)	198.7 MB
<input checked="" type="checkbox"/>	VMware Horizon	137.6 MB
<input checked="" type="checkbox"/>	Local Browser (Firefox)	133.7 MB
<input checked="" type="checkbox"/>	NVIDIA graphics driver	132.9 MB
<input checked="" type="checkbox"/>	Windows Virtual Desktop Client (WVD)	93.6 MB
<input checked="" type="checkbox"/>	IBM i Access Client Solutions	76.0 MB
<input checked="" type="checkbox"/>	VirtualBox	66.8 MB
<input checked="" type="checkbox"/>	Cisco JVDI client	64.7 MB
<input checked="" type="checkbox"/>	Zoom VDI	49.5 MB
<input checked="" type="checkbox"/>	Cisco Webex Teams VDI	45.9 MB

- **All:** Select all features
- **None:** Select no feature
- **Feature:** Sort the list alphabetically
- **Size:** Sort the list by the memory requirements of the features